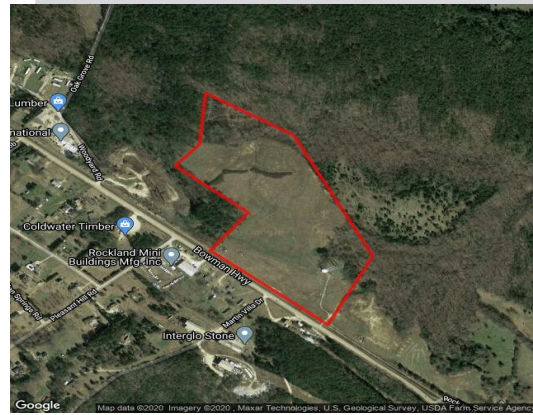


GA 17 Goss Site

Elberton, GA 30635
Elbert County

Contact

Daniel Dobbins
Development Authority of Elbert County, Elberton
and Bowman
678-925-7988
ddobbins@elberton.net



Property

Largest Tract: 37
Remaining Acres: 37
Total Acres: 37
Sale or Lease: Sale
GRAD Site: No
Zoning: Agricultural

Workforce

County Laborforce:¹ 7,704
County Average Weekly Wage: \$672
County Unemployment Rate: 4.3%

Incentives

Job Tax Credit: \$3000 / job
Investment Tax Credit: 3%
City Freeport Category 1,2,3,4: 100%,100%,100%,0%
County Freeport Category 1,2,3,4: 100%,100%,100%,0%
Opportunity Zone: No
Federal Opp. Zone: No
Less Developed Census Tract: No
Military Zone: No
Foreign Trade Zone: No
New Market Tax Credit: Yes

Utilities

Water On Site: Yes
Water Main Size: 12 inches
Sewer On Site: Yes
Sewer Main Size: 6 inches
Gas On Site: Yes
Gas Main Size: inches
Electric Provider: Georgia Power

Taxes

County Effective Property Tax: \$11.29 per thousand dollars FMV
Total County Millage Rate: 28.24
Sales Tax: 8%

Transportation

Nearest International Airport: Greenville Spartanburg International, 64.9 miles
Nearest Interstate: I 85, 23.8 miles
Nearest Port 1: Port of Savannah, 175.8 miles
Nearest Port 2: Port of Charleston, 195.5 miles
Nearest Intermodal: Inman Rail Yard, 91.4 miles
Rail Served: Yes
Rail Provider: Hartwell